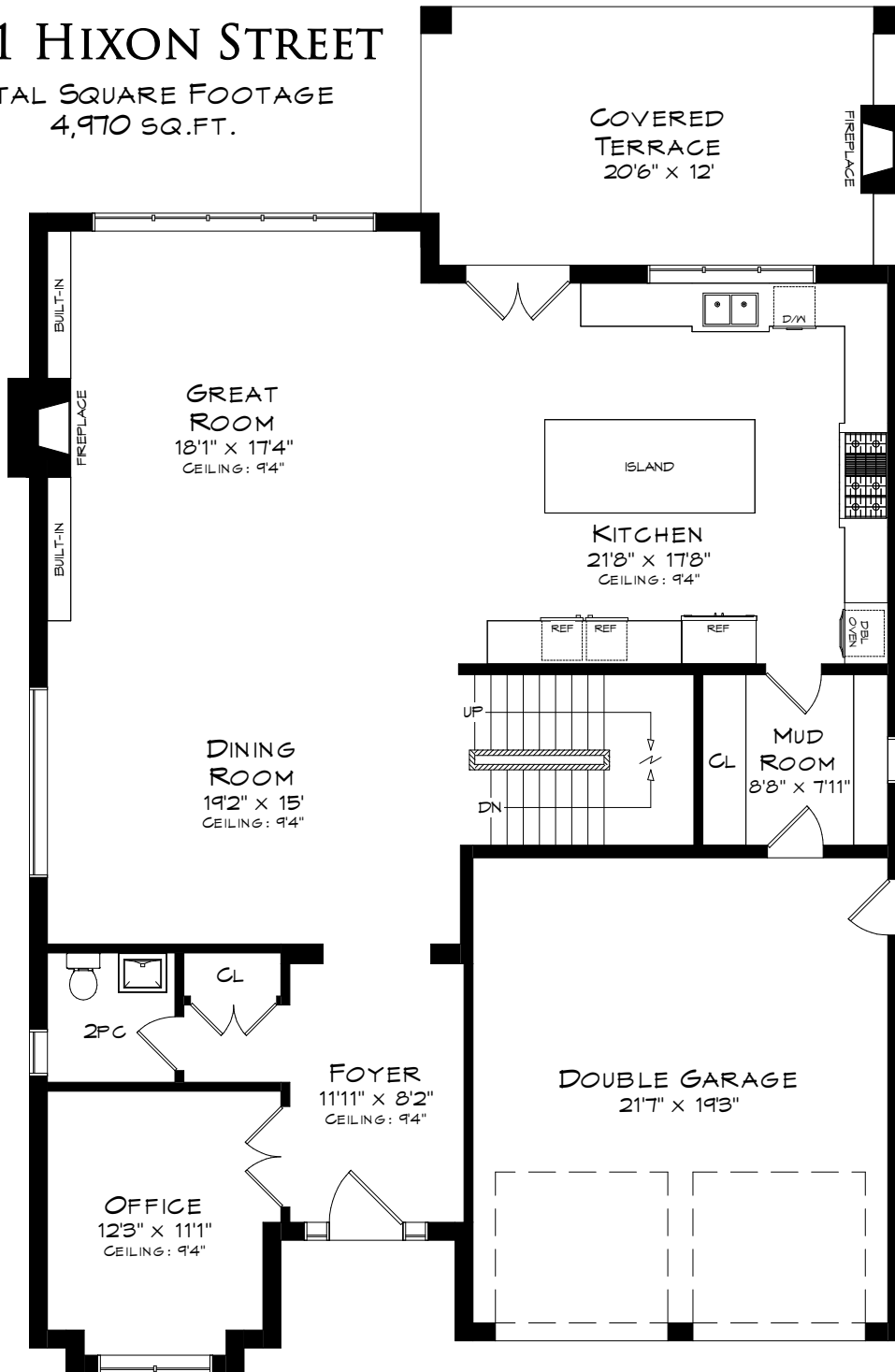
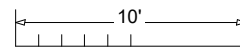


2361 HIXON STREET

TOTAL SQUARE FOOTAGE
4,970 SQ.FT.

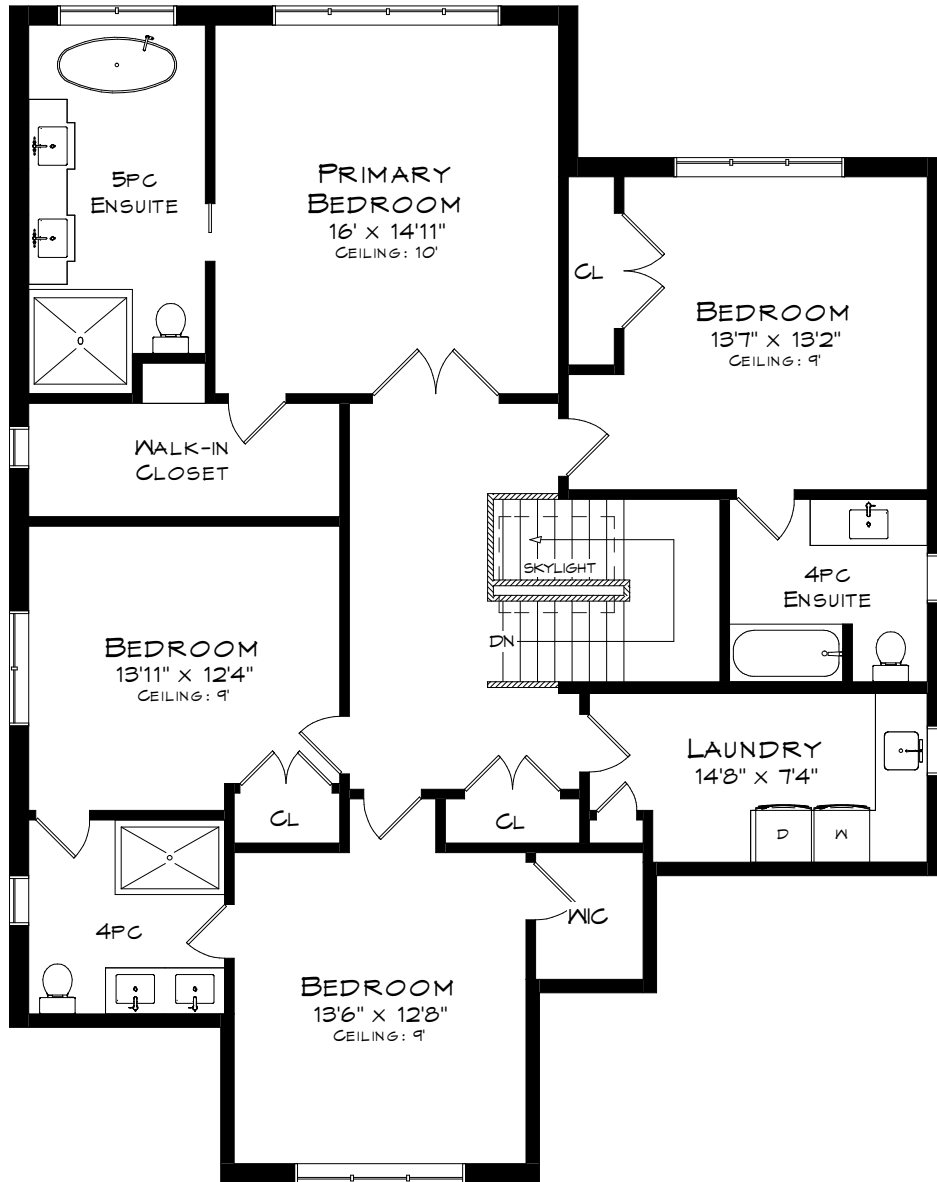


MAIN LEVEL
1,607 SQUARE FEET
+ 456 SF (GARAGE)

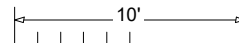


Measurements may not be 100% accurate
and should be used as a guideline only.
September - 2024

2361 HIXON STREET

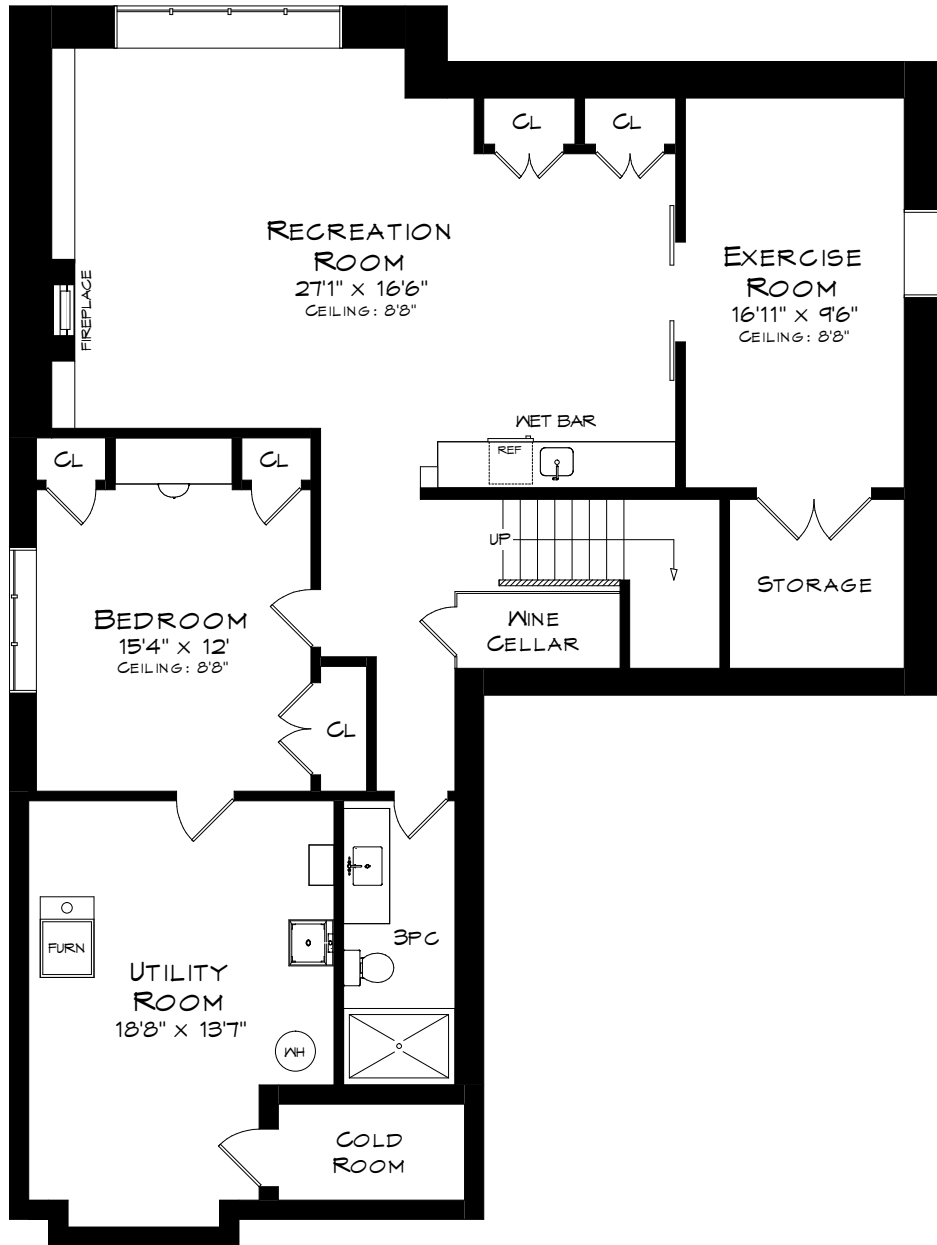


UPPER LEVEL
1,711 SQUARE FEET

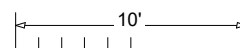


Measurements may not be 100% accurate
and should be used as a guideline only.
September - 2024

2361 HIXON STREET



LOWER LEVEL
1,652 SQUARE FEET



Measurements may not be 100% accurate
and should be used as a guideline only.
September - 2024